



NEWSLETTER

Friends of Wood Island Lighthouse

woodislandlighthouse.org

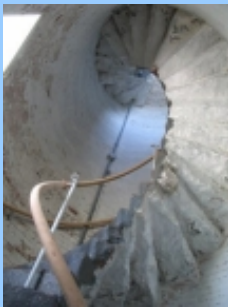
PO Box 26, Biddeford Pool, ME 04006



photograph by [Bill Edmunds](#) our website Tech Support.

July 2008

What is this?



UP

This is the new handrail system which you will be able to use to ascend the tower when you come to Wood Island Lighthouse on a tour this summer. It only needs sanding and finishing.

If you would like to help - let us know.

brad@woodislandlighthouse.org



DOWN

Outreach

FOWIL Meets the Challenge

Inspired by a very generous \$7,500 anonymous challenge grant made last August, FOWIL pulled out the stops to raise the matching money. The donor's original condition was that we reach our goal by December 31st. We did that and more with campaign donations that carried over into 2008. Individual donations ranged from \$100 to \$10,000, and, when combined with the donor's grant, memberships, donations, tour proceeds and merchandise sales, we now have a total of \$125,000 in hand. Hats off to all of our volunteers and to our generous and loyal donors.

Goal

FOWIL is striving to raise the funds necessary for the repainting of the tower. "Capture the Coast" art auction on July 13th 4-7PM will help in this endeavor and some special features of this event will pay tribute to the 200th birthday of this great facility.

Seating is limited. Those looking for a beautiful painting of the seacoast from Prouts Neck to Wells are invited to make reservations now. The event will be \$25/person and may be made by calling our volunteer at 207-284-9807

TOURS

This summer will be our 5th year of running tours to Wood Island Lighthouse! Our schedule will be the same as last year.

Wednesdays 4:30 and 5:30PM

Thursdays 5:00 and 6:00PM

Saturday 1 and 2PM

Reservations are required

The reservation line run by volunteers will be open Tuesday-Friday

207 286-3229

Shipwreck



This boat wrecked on the East end of Wood Island sometime shortly before Friday the 13th.

There was a freshly caught Bluefish aboard. Anyone know anything about this?

Gulls are flourishing

As is usual this time of year, the seagull chicks are hatching. That means wear a hat and take a stick when you traverse the boardwalk on the island.



Web and Newsletter Team: Sean Murphy, Bill Edmunds, Sheri Poftak

The Friends of Wood Island Lighthouse

is a chapter of the

American Lighthouse Foundation.

It was formed in the Spring of 2003 specifically to preserve and restore the Wood Island Light Station.

Please visit our website.

www.woodislandlighthouse.org

Peep!

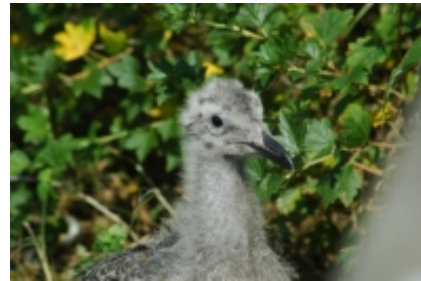


photo by visitor
Chris Weeman