



NEWSLETTER

If you are having trouble reading the newsletter click [here](#).

Friends of Wood Island Lighthouse

woodislandlighthouse.org

PO Box 26, Biddeford Pool, ME 04006



photograph by [Bill Edmunds](#) our website Tech Support.

May 2007

[Outreach](#)

[Store](#)

What is this?



We believe this is the ship Dandelion and that she wrecked in 2000.

FOWIL Executive Committee opportunity, Membership Coordinator Position available.

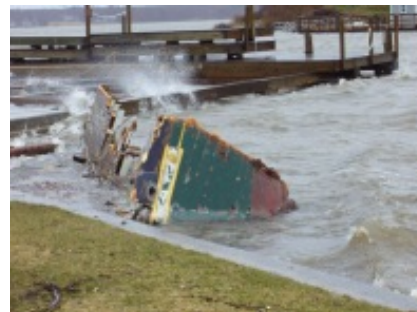
Be an EXECUTIVE Friend of FOWIL. The Executive Committee is seeking someone to join the board and assume the responsibilities of the Membership Coordinator. As a voting member of the EC you are one of the decision-makers about the future "history" of this historic treasure. The Membership Coordinator is also responsible for entering and maintaining membership information in an Excel database; generating periodic membership reports and mailing labels; and coordinating mailings. The current coordinator, Anita Coupe, will assist in making a smooth transition. Please contact Anita for further details

anita@woodislandlighthouse.org

The Patriot Day Storm Removes the shipwreck from Wood Island.



The Dandelion was broken up and moved to three locations during this storm. One piece is on Hill's Beach, one piece is on Negro Island and the third piece passed by Vine's Landing and came to rest in The Pool near Mile Stretch Road.



Anne Bassett caught it with her camera during it's brief stay at Vine's Landing.



Student internship is being organized.

We are shaping up an internship program which we know will be appealing to an incoming UNE student next year. If you are a student now who would be available to help out this year for a small stipend, a ton of excellent experience, and a connection with a beautiful island lighthouse, please read the job description and get in touch with sheri@woodislandlighthouse.org

JOB DESCRIPTION

- Primary coordination of boat tours.
- Coordinate the selling of our new merchandise.
- Help with general upkeep of the lighthouse.
- Learn about supervising.
- Need cell phone and good computer skills.

The lighthouse tower, dwelling house, oil house, boat house, boardwalk, and boat ramp remained unharmed during the Patriot Day Storm .

The light station maintained both its' water and electricity but there is a tremendous amount to clean up.



University of New England students will be participating in a Wood Island community service project in June.

They will help us clean up this beautiful place and put it back in order and ready for tours which start on June 30th.

2007 Tours
Wednesday 5 PM & 6 PM
Thursday 5 PM & 6 PM
Saturday 1 PM & 2 PM
By reservation only.

Tours start on Saturday, June 30th.
2007 Members of FOWIL have a new benefit this year. They will be able to make reservations the week prior to their trip.
See our [TOUR Link](#).

Web and Newsletter Team: Sean Murphy, Bill Edmunds, Sheri Poftak

The Friends of Wood Island Lighthouse
is a chapter of the American Lighthouse Foundation.
It was formed in the Spring of 2003 specifically to preserve and restore the Wood Island Light Station.
Please visit our website.
www.woodislandlighthouse.org



photo by Sean Murphy